

Cast 2.5 Mm

Collection	<b>Compound + Cast</b>	
Style Number	<b>4097V</b>	
Construction	<b>Heavy Commercial Luxury Vinyl Tile</b>	
Class / ASTM F1700	<b>Class III, Type B</b>	
Finish	<b>ExoGuard+®</b>	
	U.S.	Metric
Nominal Dimensions	<b>24 in w x 24 in l</b>	<b>61 cm w x 61 cm l</b>
Actual Dimensions	<b>24.00 in w x 24.00 in l</b>	<b>60.96 cm w x 60.96 cm l</b>
Wear Layer Thickness	<b>20 mil (0.02 in)</b>	<b>0.51 mm</b>
Overall Thickness	<b>0.098 in</b>	<b>2.5 mm</b>
Edge Profile	<b>Squared Edge</b>	
Installation	<b>Direct Glue</b>	
Recommended Adhesive	<b>S150-95 Resilient Tile Spray, 4200 Resilient Tile 4 Gallon, 2200 Resilient Tile 4 Gallon or 4151 Multi-Use Premium 4 Gallon</b>	

Packaging

Pieces per Carton	<b>17 pcs</b>	
Area per Carton	<b>68 sq ft</b>	<b>6.32 sq m</b>
Weight per Carton	<b>57.79 lbs</b>	<b>26.21 kg</b>



Recommended Installation Method



Coordinating Products

LVT: Compound 2.5 Mm, Compound 5.0, Cast 5.0 Mm

Performance + Testing

Static Load (ASTM F970)	<b>Passes (Modified), *1000 lbs</b>
Residual Indentation (ASTM F1914)	<b>Passes</b>
Resistance to Heat (ASTM F1514)	<b>Passes</b>
Resistance to Light (ASTM F1515)	<b>Passes</b>
Resistance to Chemicals (ASTM F925)	<b>Passes</b>
Radiant Panel (ASTM E648)	<b>Passes, Class I</b>

\*This test is intended to compare relative properties of different styles and constructions. Results are based on a laboratory test and used for comparative purposes - real life load limit may vary.

Test Reports may be included or listed by the manufacturing/inventory style number as opposed to the noted selling style number.

Warranties

[15 Year Commercial Limited Warranty](#)  
[Commercial 15 Year Underbed Bond Warranty](#)

Diversity, Equity & Inclusion

We believe all humans are equal. Individually and collectively, we need to proactively create and promote opportunities that give everybody an equal footing in life. We nurture an environment where every voice and perspective can be heard, and proactively promote accessibility and inclusivity inside our network and beyond. One proof point is our ability to meet the criteria of the Social Fairness pillar of the Cradle to Cradle Product Standard. At Shaw Industries, we promote supplier participation that is reflective of Shaw's diverse customer base and local community. More than 42% of our spend\*\*\*\*\* is with small and diverse businesses. We believe having a strong Supplier Diversity Program is strategic for bringing more innovation to our businesses and openingnew markets for growth.

Material Health & Environmental Certifications

Health & Wellbeing

Material Ingredient Transparency

Health Product Declaration (HPD) | 1000 ppm Disclosure

Climate Impact

Environmental Product Declaration (EPD)

3rd Party Certified in Accordance with ISO 14025, EN 15804, & ISO 21930:2017

Total Recycled Content

30% (Pre-Consumer 30% | Post-Consumer 0%)

Global Product Assessment

Environmental Guarantee\* | Through Our Environmental Guarantee, Shaw Pledges to Transport And Recycle Any Shaw Manufactured Resilient Within The United States And Canada At No Cost to The Customer.

FloorScore® | Certified

GSA | Approved

CE Marking (EN 14041) | 3rd Party Certified

Country of Origin | United States

WELL V2 Contribution Credit

X01 Fundamental Material Precautions Part 1: (C): Restrict Asbestos Precondition	<b>Absence of Asbestos</b>
X08 Hazardous Material Reduction Part 1: Limit Hazardous Materials Optimization	<b>Absence of Heavy Metals</b>
X10 Volatile Compound Reduction Part 1 (A): Manage Volatile Organic Compounds (VOCs) Optimization	<b>Absence of Halogenated Flame Retardants</b>
X10 Volatile Compound Reduction Part 2: Manage Semi-Volatile Organic Compounds (SVOCs) Optimization	<b>Ortho-Phthalates</b>
X11 Long Term Emissions Control Part 2: Flooring Optimization	<b>FloorScore Certificate</b>

## Leed v4 Contribution Credits

MR Credit: Building Product Disclosure and Optimization  
Material Ingredients - Option 1: Material Ingredient Reporting

MR Credit: Building Product Disclosure and Optimization  
Environmental Product Declarations - Option 1: Environmental Product Declaration (EPD)

EQ Credit: Low Emitting Materials  
Option 1: Product Category Calculations

**Health Product Declaration (HPD) | 100 Ppm Disclosure**

**3rd Party Certified in Accordance with ISO 14025, EN 15804, & ISO 21930:2017**

**FloorScore Certified**

## Additional Information

\* To learn more about the recyclability of our products and our Environmental Guarantee, please visit [shawcontract.com/sustainability](https://shawcontract.com/sustainability).

[Installation Guidelines](#)

[Maintenance Guidelines](#)

Please visit [www.shawcontract.com](https://www.shawcontract.com) for the most current warranty information.

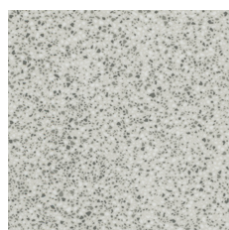
Specifications are subject to nominal manufacturing variance. Material supply and/or manufacturing processes may necessitate changes without notice.

This product is an exclusive design and may not be duplicated in any manner. Use of this design in the creation of another product design is also strictly prohibited.

\*\*\*\*\*Allowable spend is domestic (US) spend in categories in which we have diverse suppliers from which to choose. Compared to non-allowable spend which includes categories in which we do not have domestic, small or diverse suppliers available to meet our needs.

Visit [shawcontract.com/testing](https://shawcontract.com/testing) for more information.

## Available Colorways



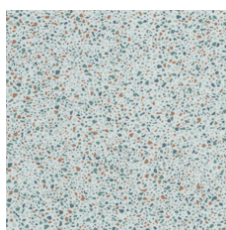
Melded 98111

V1 - Uniform Appearance



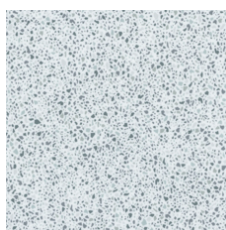
Unbound 98114

V1 - Uniform Appearance



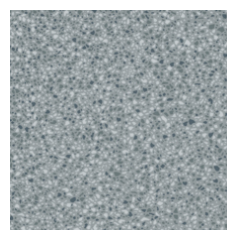
Suspend 98510

V1 - Uniform Appearance



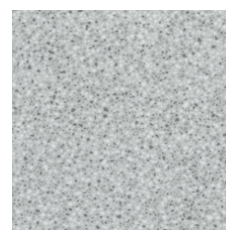
Composite 98515

V1 - Uniform Appearance



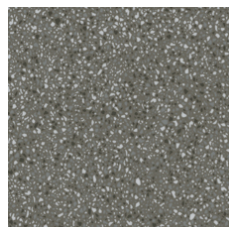
Core 98518

V1 - Uniform Appearance



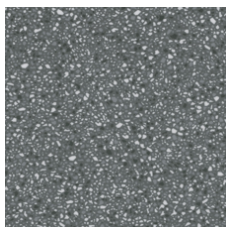
Elemental 98525

V1 - Uniform Appearance



Allure 98530

V1 - Uniform Appearance



Instill 98585

V1 - Uniform Appearance

## Color and Visual Variation Index

Shade and texture variation is inherent in all resilient products and can vary significantly from piece to piece. Samples should be used to assess color.

V1



Uniform Appearance

V2



Slight Variation

V3



Moderate Variation

V4



Substantial Variation



Corporate Headquarters +1 800 257 7429 | +1 706 532 7984 | Atlanta +1 404 853 7429 | Bengaluru +91 80 6773 0202 | Beijing +86 10 6568 588 | Chicago +1 312 467 1331 | Dubai +971 4 584 6956 | Hong Kong +852 2623 0371 | Latin America (Miami) +1 305 827 5912 | London +44 207 961 4120 | Los Angeles +1 800 233 1614 | Melbourne +61 3 9939 8543 | Mexico City +55 5010 7600 | Mumbai +91 22 6284 5050 | Nantong +86 400 800 7429 | New York +1 212 953 7429 | Paris +33 (0) 1 81 22 44 39 | San Francisco +1 415 955 1920 | Santiago +562 2431 5000 x 550 | São Paulo +55 11 3071 1702 | Shanghai +86 21 3338 4000 | Singapore +65 6733 1811 | Sydney +1 800 556 302

© 2024 Shaw Industries Group, Inc., a Berkshire Hathaway Company  
April 29, 2024

3 of 3